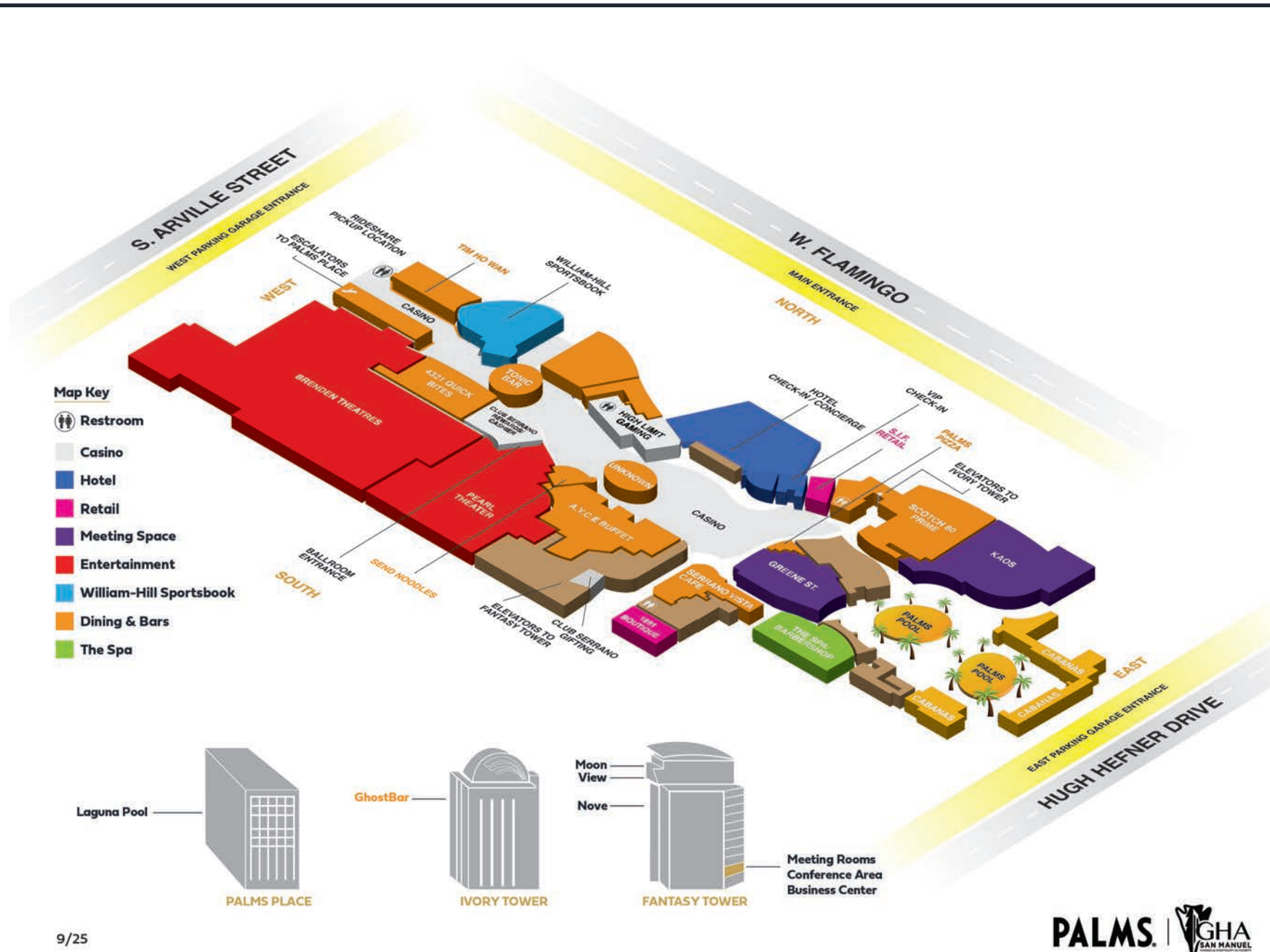


PALMS[®]
CASINO RESORT • LAS VEGAS

PALMS
PALMS
PALMS



PROPERTY MAP



The logo for DALIWS is located on the left side of the slide. It features the word "DALIWS" in a large, bold, sans-serif font. The letters are a light yellow color, matching the background of the left sidebar. A registered trademark symbol (®) is positioned to the upper right of the letter "S".

GUEST ROOMS

Rooms that celebrate the traveler mindset.
Both character and luxury were considered during the design phase. The perfect shape for you to do you.



IVORY KING

1 KING BED | 440 SQ. FT.

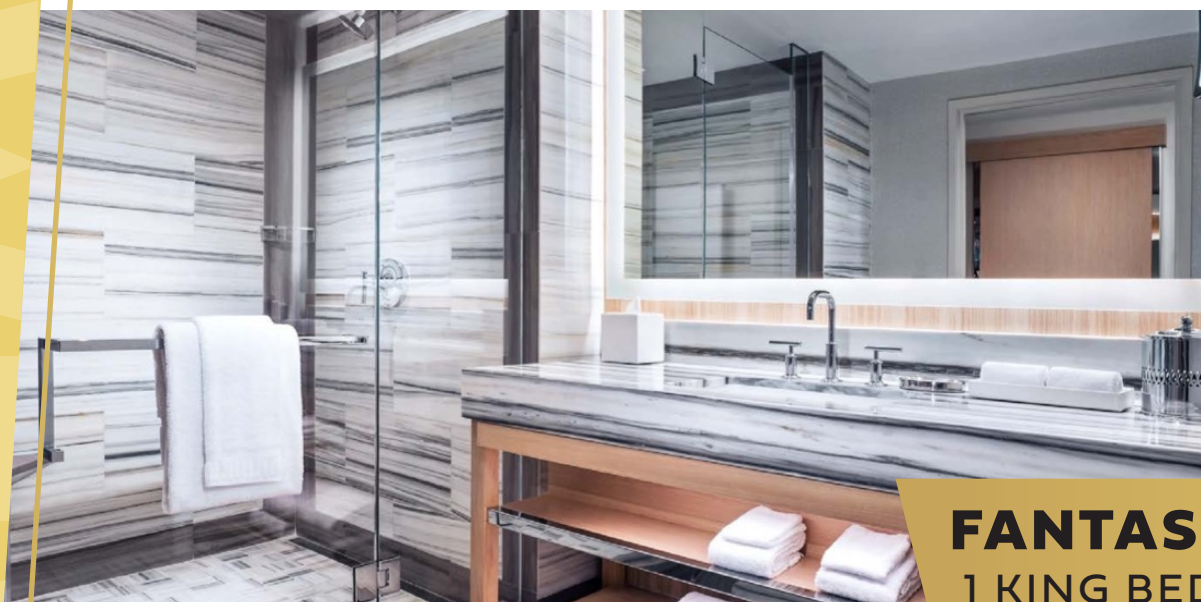
The Ivory Tower King room at the Palms Casino Las Vegas is the perfect place to relax and recharge after a long day of exploring the Strip. With its king-sized bed, marble bathroom, and spacious sitting area, the room offers everything you need for a comfortable stay. Whether you're in town for business or pleasure, the Ivory Tower King room at the Palms Casino Las Vegas is sure to make your trip a memorable one.



PALMS PLACE STUDIO

1 KING BED | 615 SQ. FT.

If you're looking for a luxurious place to stay during your next visit to Palms Place, look no further than the Studio Suite. This beautifully appointed room comes complete with everything you need to feel right at home, including a king-sized bed, a spacious living area, and Italian bedding. In addition, the Studio Suite features a large whirlpool tub, perfect for relaxing after a long day of exploring. Whether you're in town for business or pleasure, the Studio Suite at Palms Place is sure to exceed your expectations.



FANTASY KING

1 KING BED | 510 SQ. FT.

With its comfortable king-size bed and spacious bathroom, this room provides the perfect retreat. Plus, the room comes with all the amenities you could possibly want, including a TV, mini-bar, and complimentary Wi-Fi. Whether you're in town for business or pleasure, the Palms Fantasy Tower King room is the perfect place to relax and unwind.



FANTASY EXECUTIVE SUITE

1 KING BED | 840 SQ. FT.

Stay business class. The Fantasy Executive suite gives you room to work and play with a conference table and desk area.

The logo for DALWALS is located on the left side of the slide. It features the brand name in a stylized, bold font. The letters 'DAL' are in a dark blue color, while 'WALS' is in a lighter, teal-blue color. A registered trademark symbol (®) is positioned to the upper right of the 'S'.

THEME SUITES

Rooms that celebrate the imagination.

Luxury amenities get a new definition.

The perfect suite for unbelievable memories.

FANTASY ONE BEDROOM PENTHOUSE

1 King Bed | 2-6 Guests | 1,432 Sq. Ft.



The Palms Casino Resort One Bedroom Penthouse is the perfect choice for those who want to enjoy all the best that Las Vegas has to offer. From the moment you step inside, you'll be greeted by luxurious accommodations, including a private bar, dining area for eight, and floor-to-ceiling views of the Vegas Strip. Thanks to 24-hour dedicated butler service, you'll have everything you need at your fingertips, ensuring a truly enjoyable stay. Whether you're in town for business or pleasure, the Palms Casino Resort One Bedroom Penthouse is sure to exceed your expectations. Book your stay today and experience the ultimate in Las Vegas luxury!



KINGPIN SUITE

1 King & 4 Queen Bunk Beds | 10 Guests | 4,240 Sq. Ft.

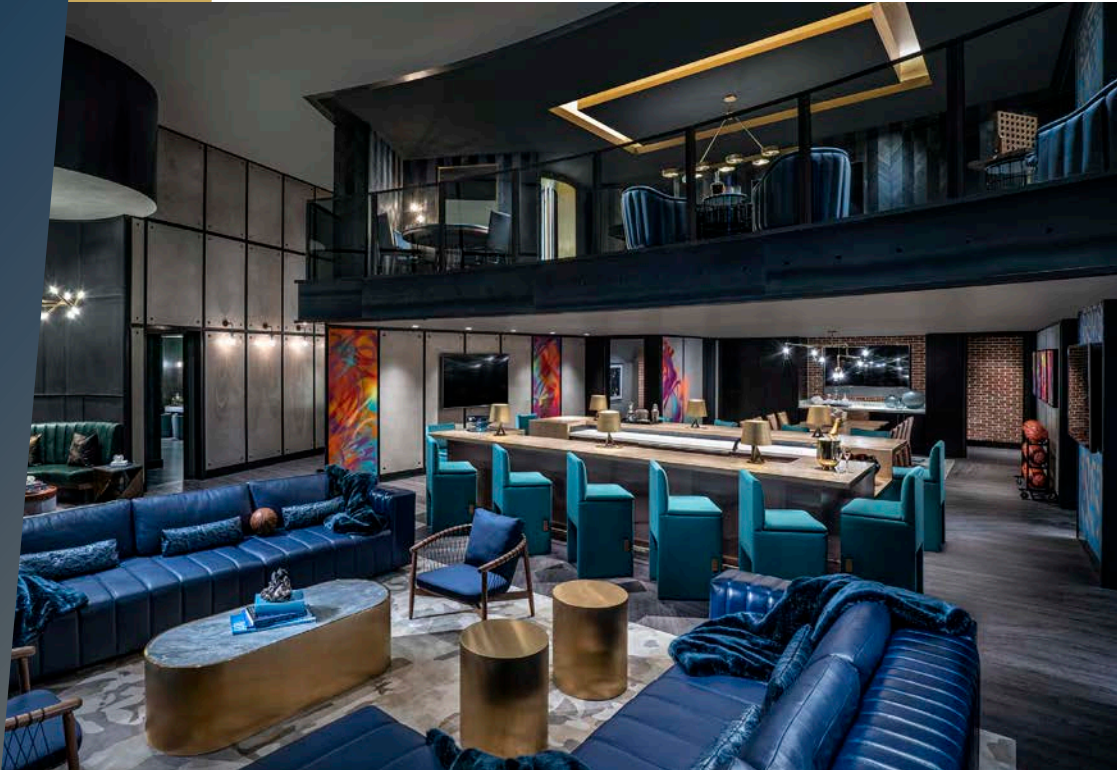


At the Palms Casino Resort, we believe that being a high roller should mean more than just having deep pockets. That's why we offer our guests the Kingpin Suite, a private oasis where you can enjoy all the games you love in complete comfort. With two professional bowling lanes, automatic scoring, and your own personal shoes and balls, you'll feel like a VIP from the moment you arrive. And that's just for starters. We also have game tables and a full bar, so you can keep the fun going all night long. Whether you're hosting a party or just looking for a night of luxury, the Kingpin Suite is the perfect place to stay in your lane.



HARDWOOD SUITE

2 King & 3 Murphy Beds | 10 Guests | 10,000 Sq. Ft.



The Palms Casino Resort Hardwood Suite is the ultimate destination for basketball fans. This luxurious 10,000-square-foot suite features its own private court, professional locker room, and two stories of living space.

The first floor is perfect for pre-game warmups or post-game celebrations, with a pool table, full bar, and hidden whiskey room. The second floor is all about relaxation, with a comfortable lounge area and plenty of space to spread out. Championship trophy sold separately.

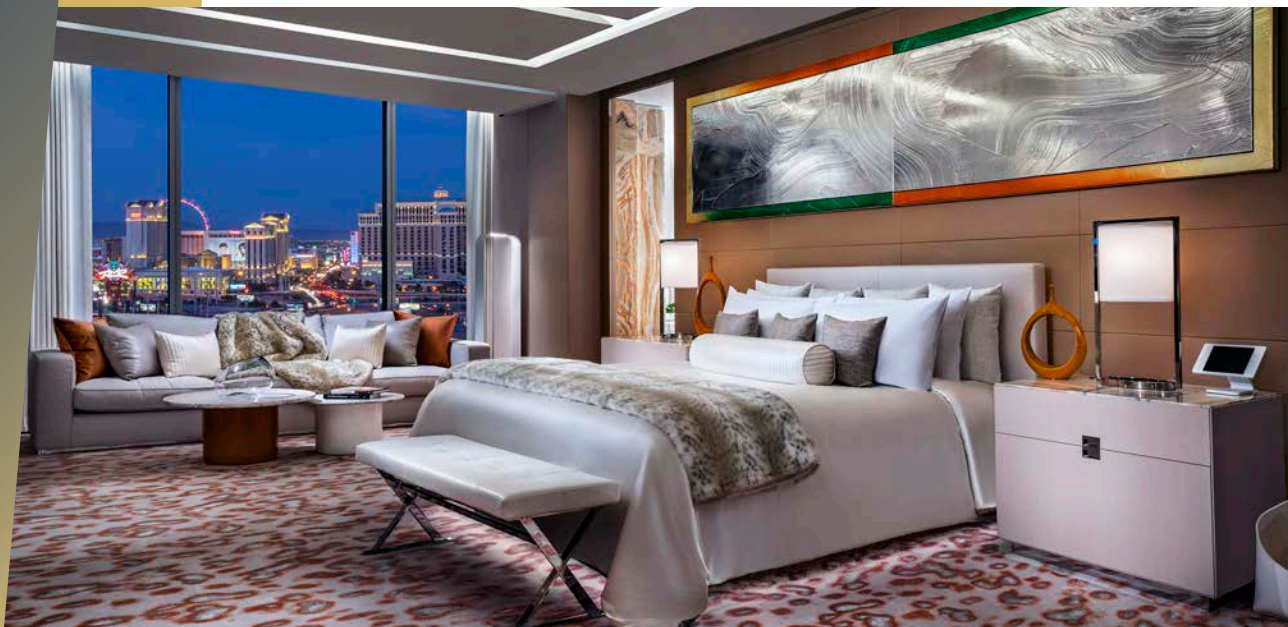


ONE STORY SKY VILLA

2 King Beds | 4 Guests | 5,000 Sq. Ft.



When it comes to luxury, the Palms Casino Resort One-story villa is in a class of its own. From the private terrace pool and in-suite spa areas to the 24-hour butler service, this villa has everything you need to make the most of your trip. The accommodations are top-notch, with plenty of space for up to 8 guests to enjoy private dining and two lounge areas. But the real star of the show is the view—whether you're relaxing by the pool or soaking up the rays on your private patio, you'll have an unobstructed view of the Vegas skyline that will take your breath away.

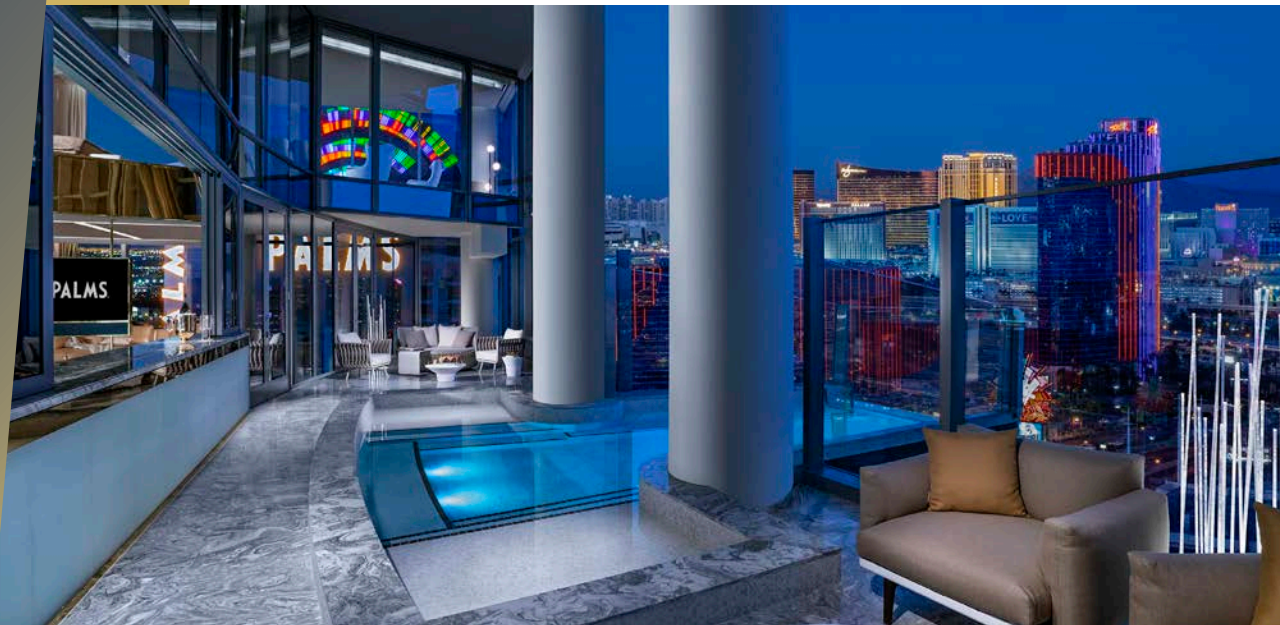


TWO STORY SKY VILLA

3 King Beds | 6 Guests | 8,500 Sq. Ft.



When it comes to luxury accommodations, the Palms Casino Resort Two-Story Sky Villa is in a class of its own. This extraordinary villa spans two full stories and can comfortably accommodate up to 6 guests. From the marble finishes and private pool to the 17-seat bar and 24-hour butler service, every detail has been designed to ensure an unforgettable experience. Whether you're hosting an intimate gathering or a large party, the Palms Casino Resort Two-Story Sky Villa is the perfect setting for an unforgettable event. So come see for yourself why this is the ultimate destination for luxury travelers. You won't be disappointed.



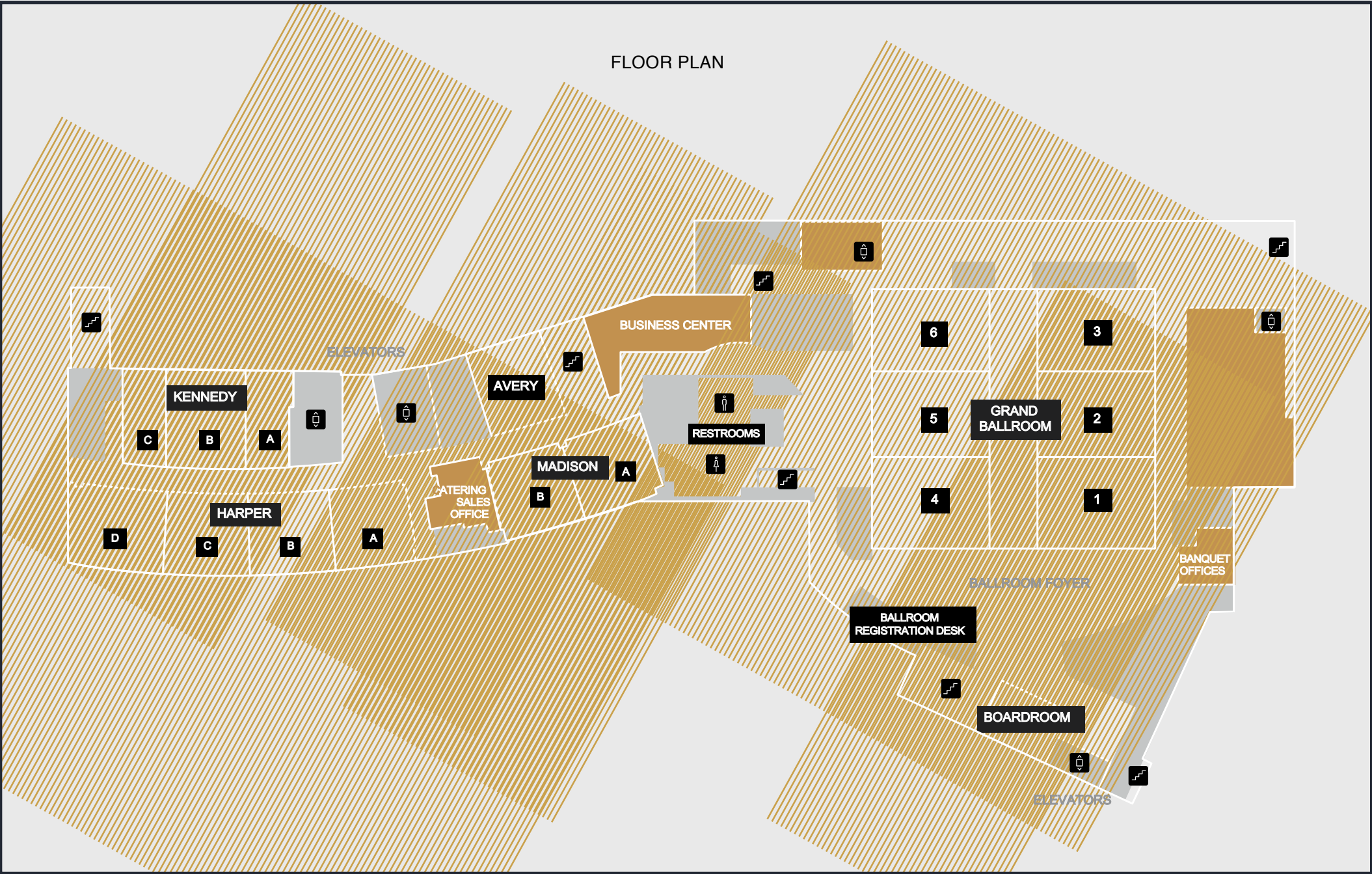
A vertical banner on the left side of the slide, featuring the word 'DALLAS' in a large, stylized, blue font. The letters are partially cut off by the edge of the frame. A registered trademark symbol (®) is visible above the 'S'.

MEETING SPACES

Over 20,000 Sq. Ft of Traditional Meeting Space

2,000 Capacity Pearl Theater

MEETING SPACES



MEETING SPACES

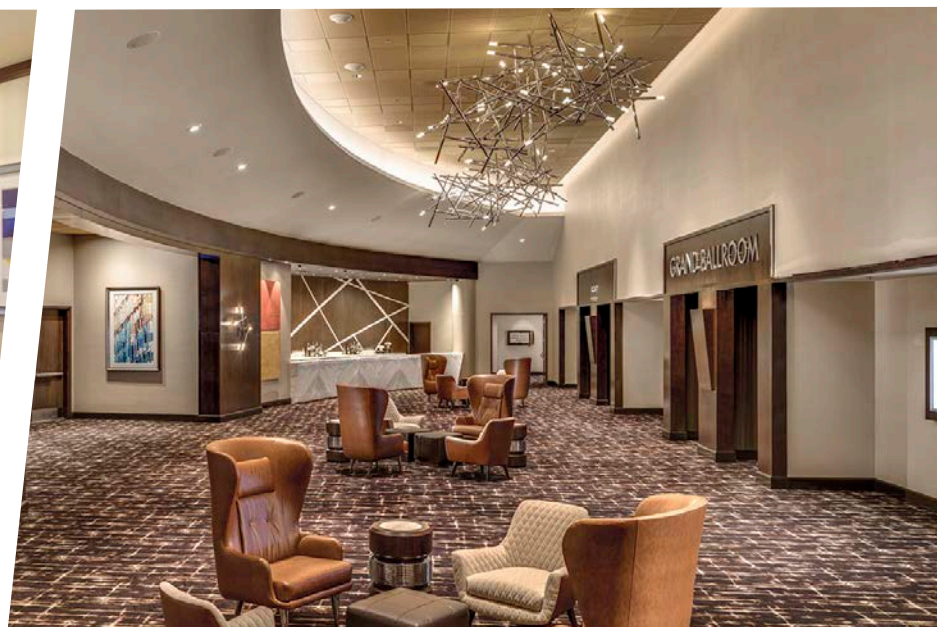


Rooms as interchangeable as our deepest desires, our space can transform from all business to all fun, accommodating just about any need.

FRESH LOOK. NEW FEEL.

FULLY CONNECTED AND TECH SUPPORTED

CONFIGURABLE TO YOUR NEEDS



MEETING ROOM FLOOR PLANS SPECS

SPACE	SQ. FT.	DIMS	CEILING HEIGHT	ROUNDS (10)	THEATER	CLASSROOM	RECEPTION	HOLLOW SQ.	U-SHAPE	CRESCENTS (7)	BOARDROOM
GRAND BALLROOM (ALL)	10,282	106'X97'	20'	640	960	425	2,200	112	82	350	-
BALLROOM 1	1,496	44'X32'	20'	60	80	60	75	40	38	42	25
BALLROOM 2	1,496	44'X32'	20'	60	80	60	75	40	38	42	25
BALLROOM 3	1,409	44'X32'	20'	60	80	60	75	40	38	42	25
BALLROOM 4	1,496	44'X32'	20'	60	80	60	75	40	38	42	25
BALLROOM 5	1,408	44'X32'	20'	60	80	60	75	40	38	42	25
BALLROOM 6	1,364	44'X32'	20'	60	80	60	75	40	38	42	25
BALLROOM 12	2,904	44'X64'	20'	120	160	120	150	80	76	84	50
BALLROOM 123	4,268	44'X97'	20'	180	240	180	225	120	114	126	75
BALLROOM 123 W/ CORRIDOR	6,146	62'X97'	20'	240	320	240	300	132	125	168	86
BALLROOM 45	2,904	44'X64'	20'	120	160	120	150	80	76	84	50
BALLROOM 456	4,268	44'X97'	20'	180	240	180	225	120	114	125	75
BALLROOM 456 W/ CORRIDOR	5,882	62'X97'	20'	240	320	240	300	132	126	168	86
GRAND BALLROOM CORRIDOR	111	18'X97'	20'	-	-	-	-	-	-	-	-
GRAND BALLROOM FOYER	2,940	-	20'	-	-	-	-	-	-	-	-
BOARDROOM	350	-	9'	-	-	-	-	-	-	-	-

MEETING ROOM FLOOR PLANS SPECS (2)

SPACE	SQ. FT.	DIMS	CEILING HEIGHT	ROUNDS (10)	THEATER	CLASSROOM	RECEPTION	HOLLOW SQ.	U-SHAPE	CRESCENTS (7)	BOARDROOM
MADISON A	870	31'X28'	9'	30	60	35	45	32	20	21	18
MADISON B	840	30'X28'	9'	30	60	35	45	32	20	21	18
MADISON AB	1,710	61'X28'	9'	60	120	70	90	64	40	42	-
HARPER B	756	30'X28'	9'	30	60	35	45	32	20	21	18
HARPER A	675	31'X28'	9'	30	60	35	45	32	20	21	18
HARPER C	675	31'X28'	9'	30	60	35	45	32	20	21	18
HARPER D	702	35'X28'	9'	30	60	35	45	32	20	21	18
HARPER AB	1,431	61'X28'	9'	60	120	70	90	64	40	42	-
HARPER ABC	2,040	92'X28'	9'	90	180	105	135	-	-	63	-
HARPER BCD	2,454	96'X28'	9'	90	180	105	138	-	-	63	-
HARPER CD	1,377	66'X28'	9'	60	120	70	90	64	40	42	-
HARPER ABCD	3,398	127'X28'	9'	120	240	140	180	-	-	84	-
KENNEDY A	480	16'X34'	9'	20	40	15	20	-	10	14	15
KENNEDY B	810	29'X34'	9'	40	60	35	45	32	20	21	18
KENNEDY BC	1,290	45'X34'	9'	60	100	50	65	40	30	35	-
KENNEDY ABC	1,770	61'X34'	9'	80	120	70	90	64	40	42	-
AVERY	868	31'X28'	9'	40	60	35	45	32	20	21	18

BUSINESS CENTER



When you live your perfect life, business is always pleasure. And our Business Center isn't going to hold back on either business or pleasure. Internet access, computers, printers and whatever else you'll need to make that deal happen, we got you.

24-HR GUEST COMPUTER RENTAL STATIONS

ON-SITE PRINTING AND OFFICE SUPPLIES

SHIPPING SERVICES AVAILABLE DURING BUSINESS HOURS WITH ONSITE PACKAGE PICKUP AVAILABLE 24HR

BUSINESS CENTER LOCATION:



PEARL THEATER



A stage graced by A-list performers, ready for private concerts, conventions and live broadcasts—whatever's on the cards, this venue has you.

HIGH-DEF SOUND AND VIDEO

DOES CONVENTIONS AND VIP ENTERTAINMENT

2,000 SEATS WITH PRIVATE & SEMI-PRIVATE BOXES

PEARL THEATER LOCATION:



BRENDEN THEATRES



Film premieres, speaking engagements, conference keynotes and even breakout sessions — Brenden Theatres adds a touch of class to any event.

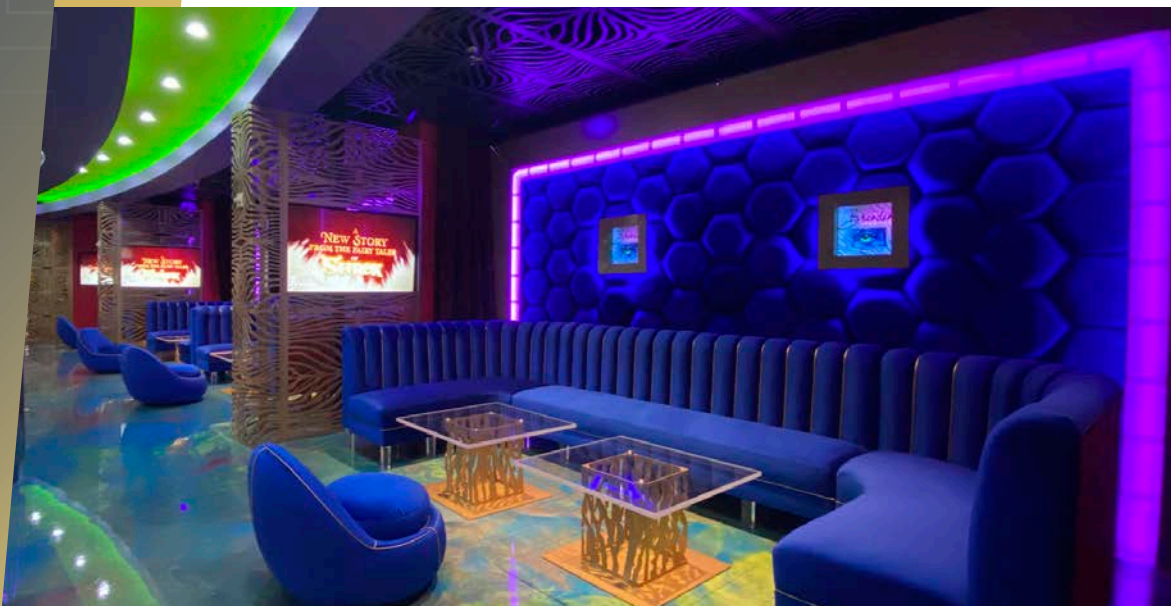
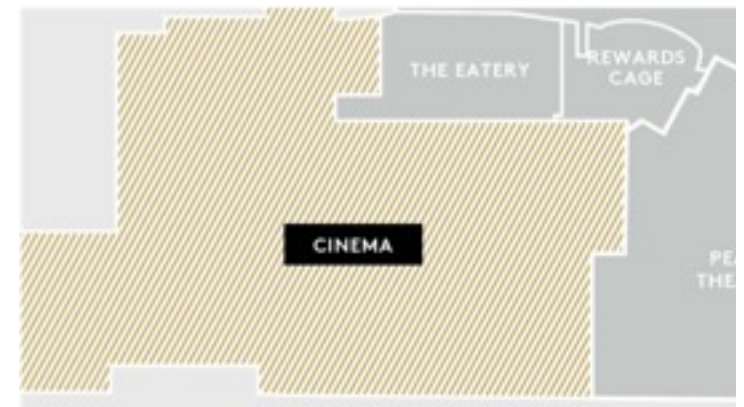
14 PRIVATE THEATERS FROM 45 – 200
STADIUM SEATS

UNIQUE OPTIONS FOR BREAKOUT SPACE

IMAX & IMAX 3D

PREMIER A/V EQUIPMENT

BRENDEN THEATRES:





UNIQUE SPACES[®]

Over 150,000 Sq. Ft. of Special Event Space

Stylish Cocktail Receptions From 20 - 20,000 Guests

Inimitable Indoor & Outdoor Venues

Breathtaking Views

Endless Variety of Unique Spaces

MOON EVENT SPACE



The Moon Event Space is truly the crème at the top of the Fantasy Tower--boasting a retractable roof for an unimpeded look at the stars! Add top-shelf cocktails, and extensive wine & champagne list, and you truly have the best of the best.

RECEPTION CAPACITY: 500

CLASSROOM CAPACITY: 90

PLATED DINNER: 200



PRIVATE EVENT SPACE LOCATION:



VIEW EVENT SPACE

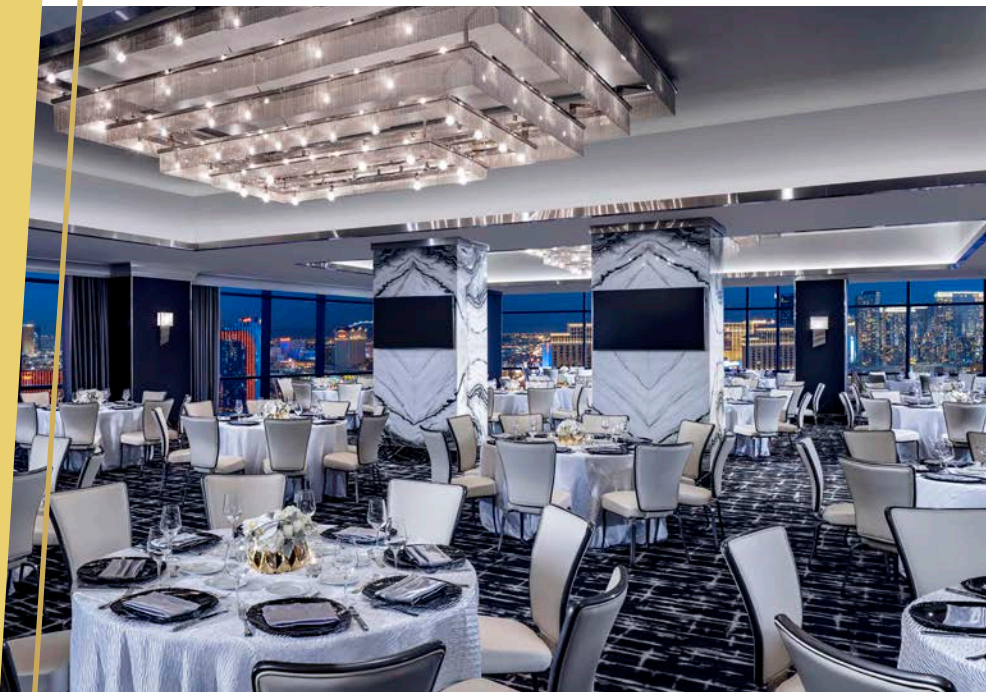


Enjoy 360-degree views and an exclusive mezzanine balcony from this stunning meeting space that also features the most sought-out VIP amenities, including an extensive wine & champagne list.

RECEPTION CAPACITY: 500

CLASSROOM CAPACITY: 90

PLATED DINNER: 240



PRIVATE EVENT SPACE LOCATION:



NOVE EVENT SPACE



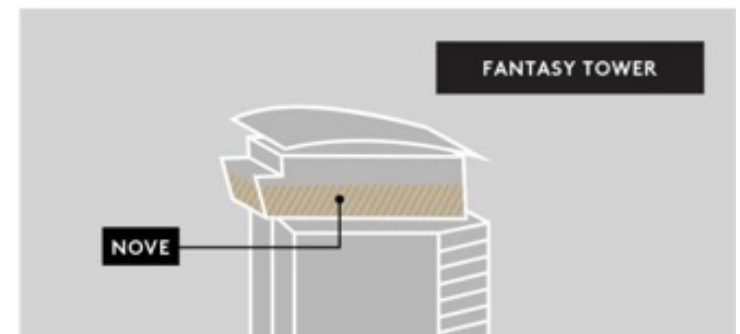
One could easily assume that Nove was built for gods to dine. At 51 floors up and filled with opulently designed gilded furnishings, crocodile-upholstered booths and Swarovski Chandeliers, it's hard to be convinced otherwise.

RECEPTION CAPACITY: 500

BUYOUT PLATED DINNER: 150



NOVE LOCATION:



GREENE ST. KITCHEN



Blending street art and food in a distinctive way, the restaurant continues the immersive experience and thoughtful art program at the resort. Created by Clique Hospitality, the dynamic, design-driven dining at Greene St. Kitchen pays homage to the artistic communities in New York's SoHo neighborhood during the early 80s.

RECEPTION CAPACITY: 500

BUYOUT PLATED DINNER: 350



GREENE ST. KITCHEN LOCATION:

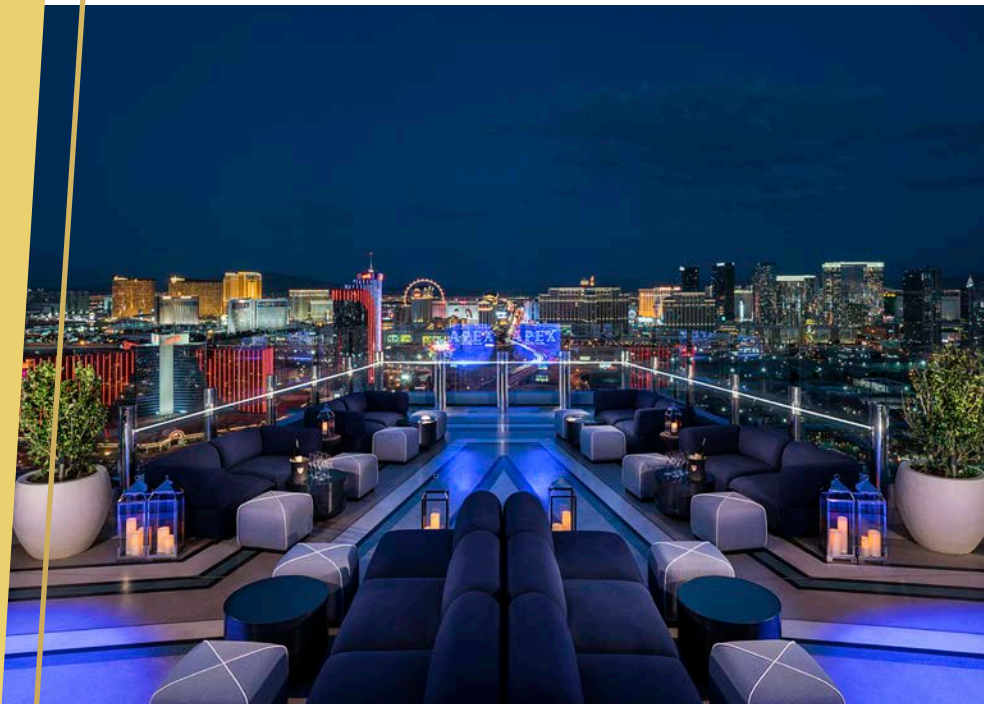


GHOSTBAR

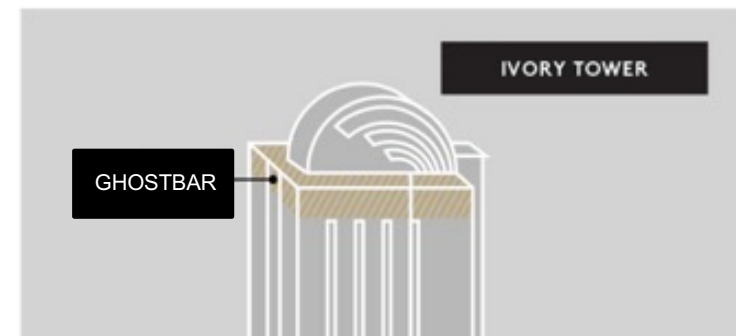


Ghostbar isn't just your every day social club. It's the crossroads of luxury and culture at the pinnacle of Las Vegas. Enjoy a signature cocktail from skilled mixologists as you gaze over panoramic views of Las Vegas, surrounded by comfort, affluence and world-renowned contemporary art.

RECEPTION CAPACITY: 425



GHOSTBAR LOCATION:



MR. COCO



An intimate private bar space, Mr. Coco is the perfect locale for your small corporate or social event.

RECEPTION CAPACITY: 50



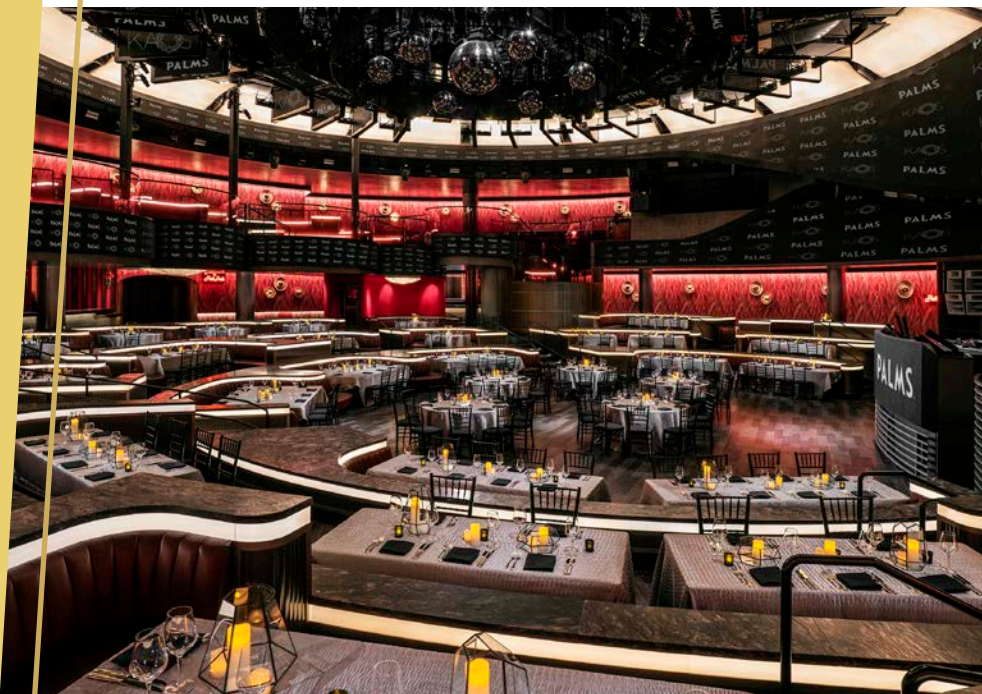
KAOS



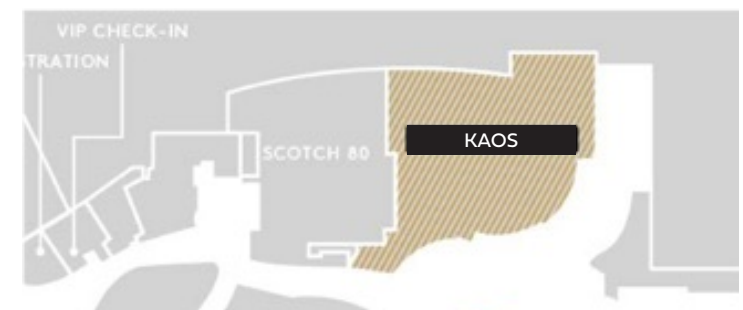
With a behemoth of a sound system synced to a spectacular light and special effects display, even the most ardent anti-dancer will have no recourse but to get with it. Great for special events and even plated dinners.

RECEPTION CAPACITY: 1,600

PRIVATE TABLES: 59



THE NIGHTCLUB LOCATION:



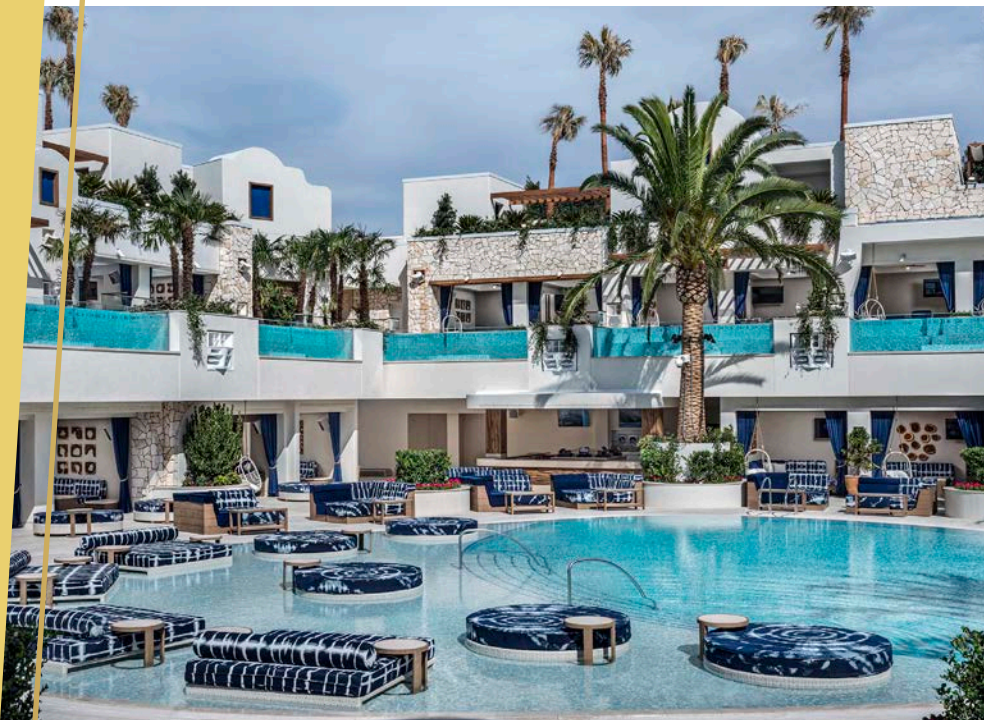
RESORT POOL



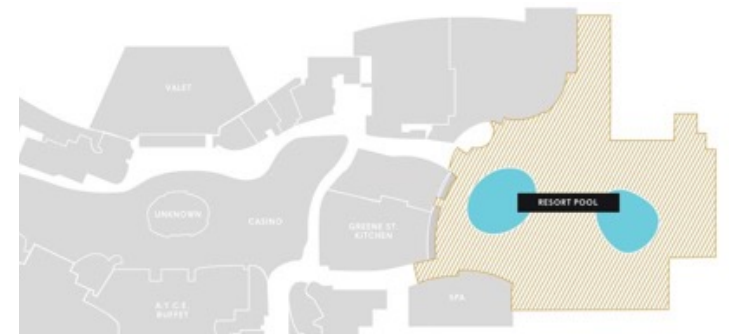
The Resort Pool blends the awe-inspiring installations of ancient times, with the sleek pleasures of modern days. The beat never stops here, come get down with it.

RECEPTION CAPACITY: 4,000

PRIVATE CABANAS: 39



RESORT POOL LOCATION:



THE SPA AT PALMS



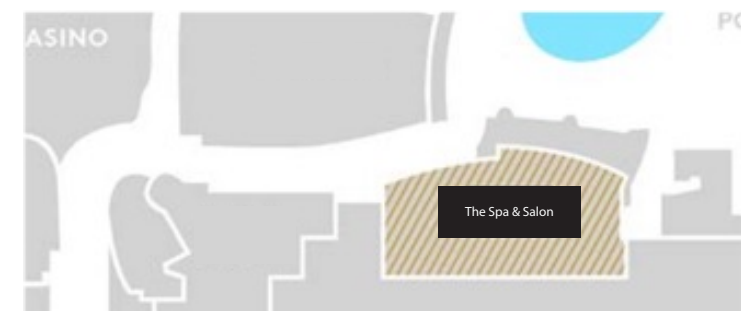
Let's face it, living at the intersection of luxury and culture can be taxing—fun as it is. So why not treat yourself. Relax, unwind, rejuvenate and enrich. Head-to-toe —whether for a night out, or just a night in, we got you. Add to that a state-of-the-art fitness center to sweat it all out, and you're just about at peak life. Well done you.

BOHEMIAN STYLE TREATMENTS

—
CELEBRITY STYLE GLAM



SPA LOCATION:





DINING & BARS

Award-Winning & Celebrity Chefs

Dining Venues From Fine to Casual

DINING & BARS

UNKNOWN

Never fear the unknown. Embrace it. Situated at the heart of the Palms Casino floor, The Unknown will bend perception, stimulate the senses and make for some damn fine selfies. Enjoy craft cocktails amongst contemporary designs as you start, or end, a night of pure thrills.

RECEPTION CAPACITY: 120



Send NOODLES

Late nights require refueling, and nothing hits the spot quite like ramen. With all the trappings of a modern ramen shop, from contemporary design, street murals and even exotic Asian specialties—Send Noodles never lets up the energy or the goodness.

RECEPTION CAPACITY: 150 | BUYOUT PLATED DINNER: 80



A.Y.C.E. BUFFET

A.Y.C.E. Buffet is a trip. With seven globally-inspired, market-style options, bold flavors, flame-broiled classics and everything in between—you'd be hard-pressed to find someplace else that takes you on a culinary cruise around the world.

BUYOUT PLATED DINNER: 275



DINING & BARS (cont.)



They say breakfast is the most important meal of the day, but we disagree. Every meal is the most important meal of the day. Consider yourself lucky that this idea is also shared by our Palms all-hours favorite, Serrano Vista Cafe. Whether it's breakfast at 6 am, breakfast at 2 pm or a little 3 am breakfast snack after a good night out, Serrano Vista Cafe has you covered. Lunch and dinner are also featured, but when every meal is as important as breakfast—nothing should stand in your way of getting it.

RECEPTION CAPACITY: 325 | BUYOUT PLATED DINNER: 156



Let's face it, few things are as welcoming as long bar stretching the entirety of a space—as pure class clientele sit and mingle. Add to that a Scotch Master, some of the most exclusive fine spirits available and a gallery's worth of fine art, and you're about to have an idea of what Scotch 80 Prime brings to the table.

RECEPTION CAPACITY: 500 | BUYOUT PLATED DINNER: 280
TWO PRIVATE DINING ROOMS (20, 60 SEATS)



Tim Ho Wan



添好運
DIM SUM SPECIALISTS

Tim Ho Wan employs a kitchen of "Dim Sum Specialists." Their commitment to serving high-quality food is explicit through this technique of hand making dishes to order and exclusively using ingredients delivered that day. The menu features favorites like Baked BBQ Pork Buns, Steamed Shrimp Dumplings and Sticky Rice in Lotus Leaf.

RECEPTION CAPACITY: 300 | BUYOUT PLATED DINNER: 126





PALMS[®]

Palms.com

PALMS_SALES@PALMS.COM
866-942-7772

4321 W. Flamingo Road
Las Vegas, NV 89103

